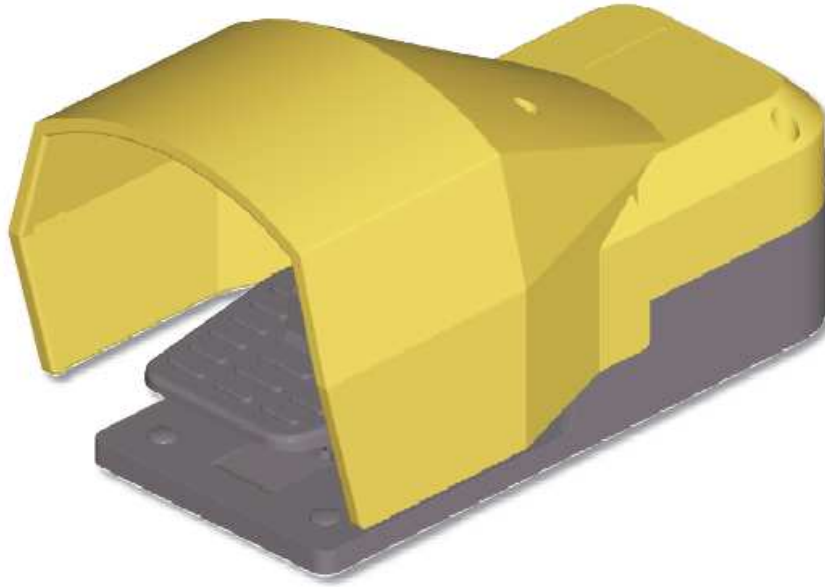




İMAJ TEKNİK
ELEKTRİK ELEKTRONİK MALZ. SAN. VE TİC. LTD. ŞTİ



6200



6200 FOOTSWITCH

■ The 6200 footswitch is a control device for all industrial machine tool. It operates as an auxiliary controller of electrical motors through a power interface, such as a contactor or PLC.

■ The 6200 footswitches are made of plastic material and they either have a standard cover or a large cover for safety-shoes. Materials and components are wear and shock-resistant.

■ Double footswitches are available; they are fixed on a metal plate and can be supplied with emergency stop mushroom pushbutton.

■ The "lock-release" device used for keeping the pedal in the on position and the safety device preventing the accidental use of the pedal can be fitted on request. Each unit can have one, two or three snap action 1NO+1NC switches. All NC contacts are of the positive opening type.

6200 FOOTSWITCH

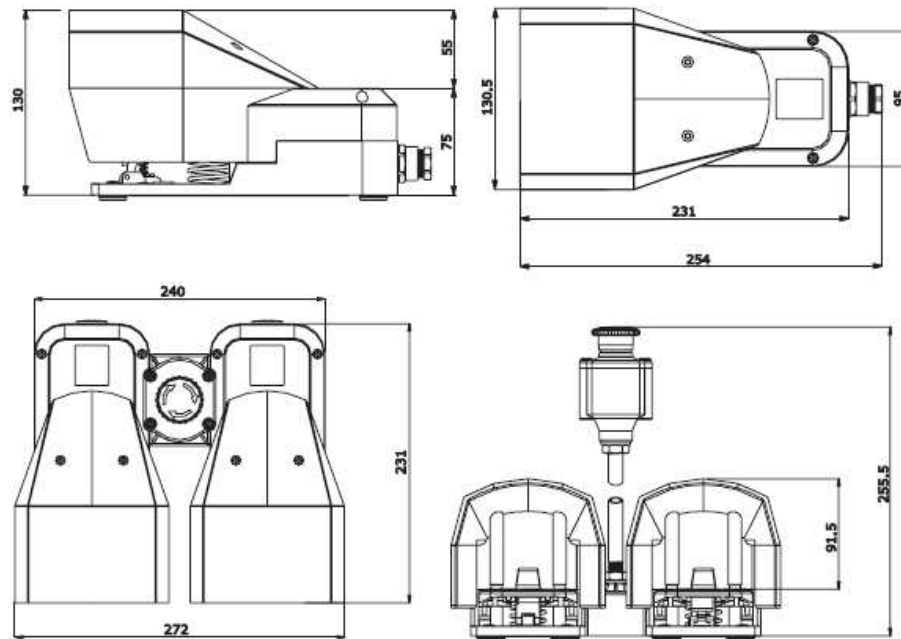
TECHNICAL SPECIFICATIONS

Conformity to Community Directives	2006/95/CE	
Conformity to Standards	EN 60947-1 EN 947-5-1 EN 60529 EN 60204-1	
Ambient temperature	Storage	-40°C/+70°C
	Operational	-25°C/+70°C
Protection degree	IP 53	
Insulation category	Class I	
Cable entry	Cable clamp M20	
Markings	CE	

TECHNICAL SPECIFICATIONS OF THE SWITCHES

Utilisation category	AC 15
Rated operational current	3 A
Rated operational voltage	250 V
Rated thermal current	10 A
Rated insulation voltage	300 V~
Mechanical life	1 x 10 ⁶ operations
Terminal referencing	According to EN 50013
Short-circuit protection	10 A cartridge fuses
Connections	Screw-type terminals with pads
Wires	1x2.5 mm ² , 2x1.5 mm ² (UL - (c)UL: use 60 or 75 °C copper (CU) conductor and wire size No. 16-18 AWG)
Tightening torque	0.8 Nm
Markings	CE, UL, (c)UL

OVERALL DIMENSIONS

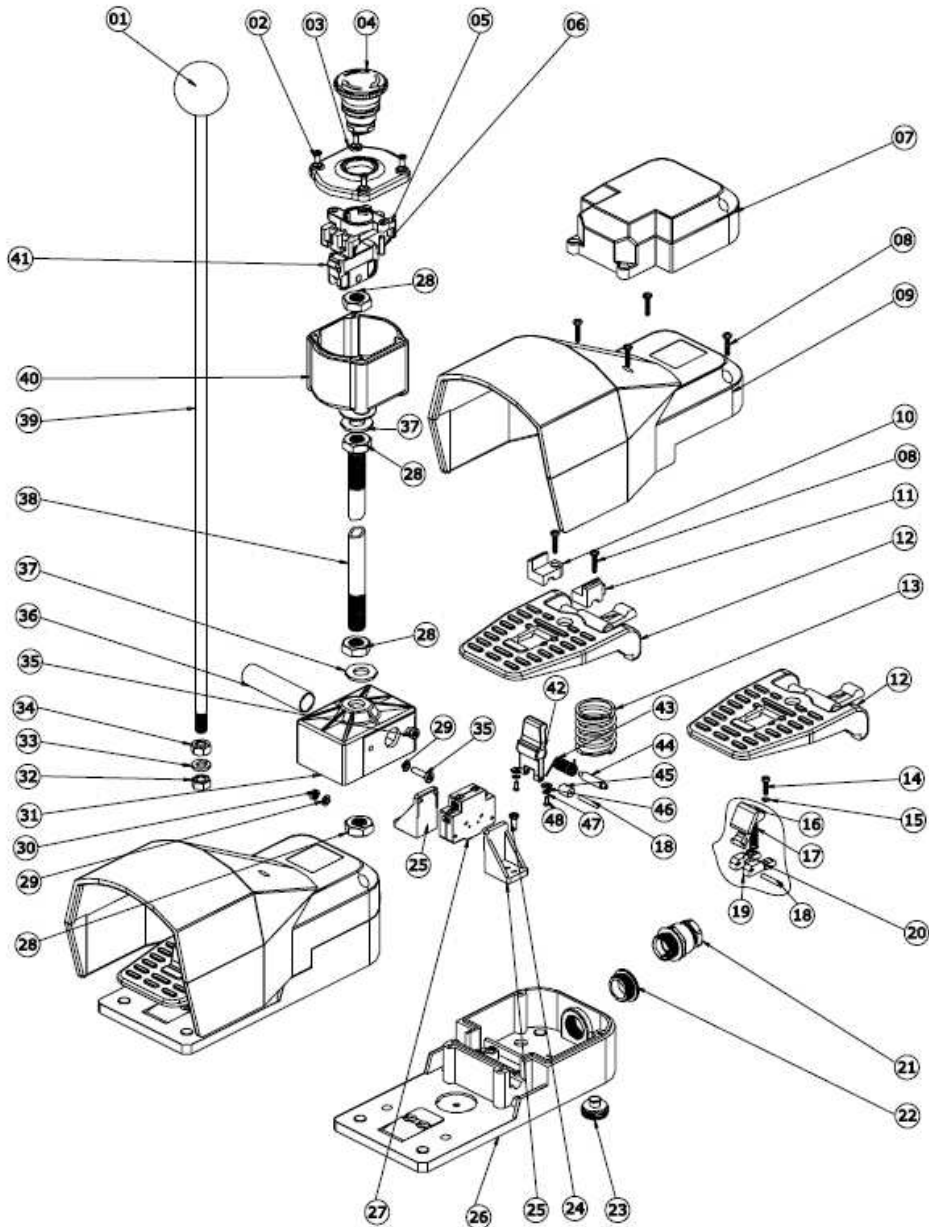


The data of the products illustrated in this brochure may be modified without notice. Under no circumstances can their depiction have a contractual value.

STANDARD FOOTSWITCH CODES

Code	Footswitch type		Switches	
	Simple	Double	Q.ty	Contacts
PF18620010	x		1	1NO+1NC
PF18620025	x		2	2x1NO+1NC
PF18620053		x	2	2x1NO+1NC
PF18620054		x	4	4x1NO+1NC

DETAILED DRAWING



6200 FOOTSWITCH



6200 FOOTSWITCH

COMPONENTS

REFERENCE	CODE	DESCRIPTION
01	PRTI6001PE	Knob
02	PRVI0036PE	Screw 3.5x10
03	PRSL5505PI	Cover for emergency pushbutton enclosure
04	PF12310001	Turn-to-release mushroom pushbutton
05	PRSL9565PI	Switch holding base
06	PRVI100700	Screw M4x14
07	PRSL5511PI	Cover for footswitch without protection
08	PRVI0097PE	Screw 3.9x16
09	PRSL5510PI	Protection
10	PRSL9087PI	Right bracket
11	PRSL9086PI	Left bracket
12	PRSL7501PI	Pedal
13	PRMO1035PE	Spring
14	PRVI0070PE	Screw M3x12
15	PRRN0018PE	Elastic washer
16	PRSL7545PI	"Lock-release" lever
17	PRMO2123PE	Spring
18	PRTR1001PE	Pin
19	PRSL9410PI	"Lock-release" lever support
20	PRSL1743XX	"Lock-release" device
21	PRPS0064PE	Cable clamp M20
22	PRPS0070PE	Threaded plug M20
23	PRGO0051PE	Foot
24	PRVI0106PE	Screw 4x10
25	PRSL9085PI	Bracket
26	PRSL6031PI	Base
27	PRSL0036XX	Snap action 1NO+1NC switch
28	PRDA0060PE	Nut
29	PRRN1012PE	Washer
30	PRDA0023PE	Nut MA4x3.2
31	PRSL5512PI	Box for double footswitch
32	PRDA0047PE	Nut
33	PRRN1105PE	Washer
34	PRDA0046PE	Nut MA8x6.5
35	PRVI0196PE	Screw M4x16
36	PRVV9060PE	Tube
37	PRRN0060PE	Washer
38	PRTU0002PE	Tube 700mm
39	PRT00156PE	Rod 8x550mm
40	PRSL5005PI	Enclosure for emergency pushbutton
41	PRSL0502PI	1NC switch
41	PRSL0503PI	1NO switch
42	PRSL7540PI	Safety lever
43	PRMO1071PE	Spring
44	PRT00695PE	Safety lever pin
45	PRSL7065PI	Pawl
46	PRRN0056PE	Washer
47	PRRN0011PE	Washer
48	PRVI0005PE	Screw 2.2x6.4

The data and the products illustrated in this brochure may be modified without notice. Under no circumstances can their description have a contractual value.

adresimiz deđiřti Emekyemez Mah. Yüksek Minare Sk. No:8 / 17
80020 Karaköy / İstanbul
Tel:212/2359535
Fax:212/2359537